

Satellite Family Child Care System

2025 Quarter 2 Report

Satellite Family Child Care System, established in 1975, currently serves family child care programs throughout Wisconsin with accreditation and support services.

Satellite's Accreditation Standards

Family child care programs achieving accreditation are recognized as meeting the highest standards in home-based early care and education. The Satellite Accreditation Standards allow programs the flexibility to implement high quality, research-based practices through a lens honoring diversity and child-centered care. The standards are organized into six areas of core competencies:

- Interactions and Relationships
- Physical Environment, Equipment and Materials
- Daily Program for Children
- Supporting Children's Development
- Health, Safety and Nutrition in the Family Child Care Home
- Business Management and Professionalism

Satellite's Support Services



Participation in Satellite

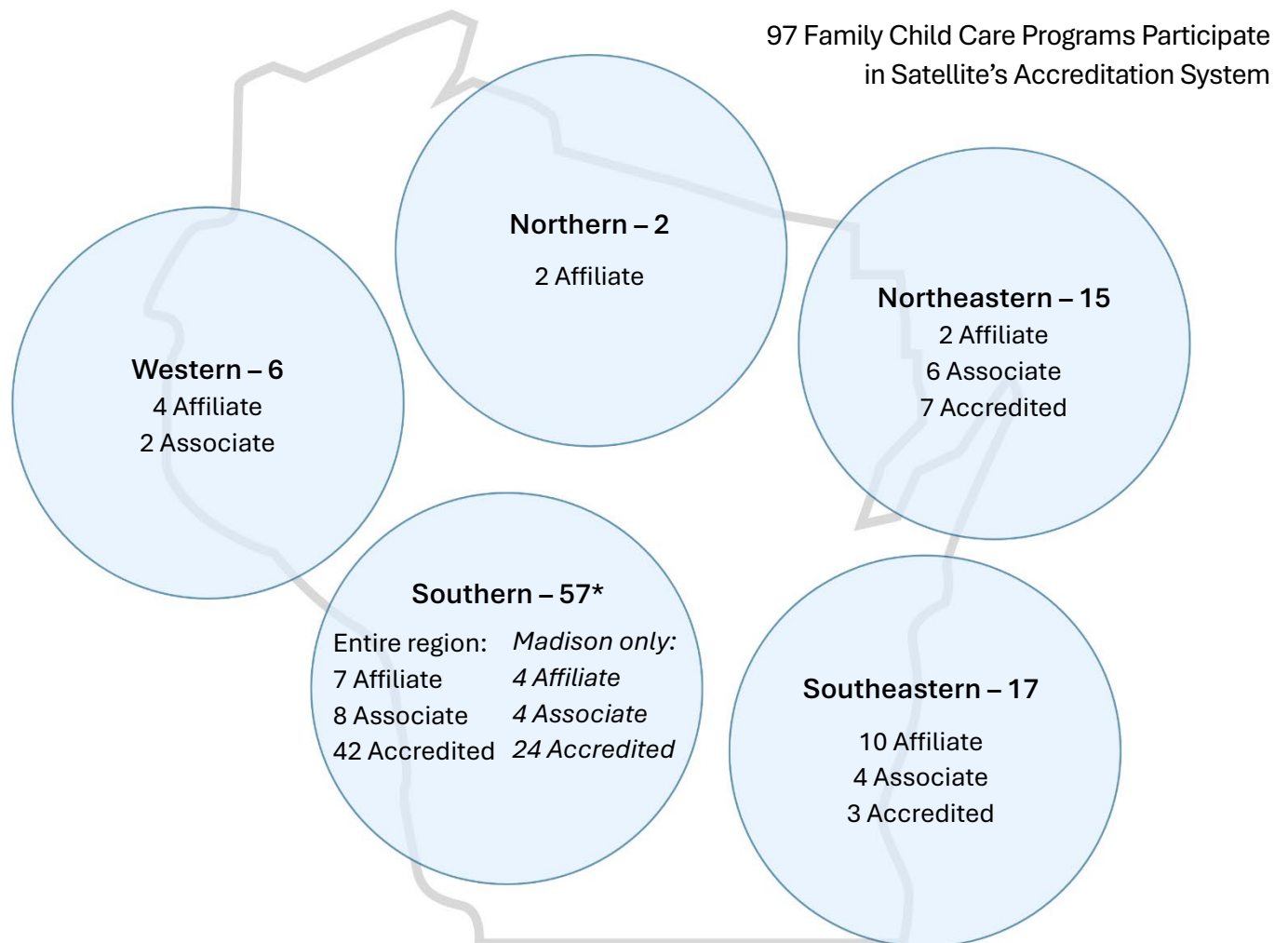
Affiliate programs are new to Satellite, often having joined within the last 0-2 years. These programs are beginning their work towards meeting all accreditation standards and becoming fully accredited.

Associate programs are on the second step of the journey to accreditation. They have often been participating in Satellite for between 6 months-3 years. These programs are working towards meeting all accreditation standards and becoming fully accredited.

Accredited programs: Family child care programs achieving accreditation are recognized as meeting the highest standards in home-based early care and education. The Satellite Accreditation Standards allow programs the flexibility to implement high quality, research-based practices through a lens honoring diversity and child-centered care. The standards are organized into six areas of core competencies:

- Interactions and Relationships
- Physical Environment, Equipment and Materials
- Daily Program for Children
- Supporting Children's Development
- Health, Safety and Nutrition in the Family Child Care Home
- Business Management and Professionalism

Once a program is accredited, it must continue to meet the Satellite Accreditation Standards to maintain that status. Every 18-21 months, the program participates in a reaccreditation process.



Satellite Consultation and Support: Satellite is a strength-based model, working on increases in quality from each program’s unique starting place while simultaneously supporting programs so that they have the resources, knowledge, and community they need to have a successful, sustainable family child care business.

The quality improvement process begins when the family child care program owner completes an application and is accepted into Satellite’s accreditation system. The consultant and program owner meet at a minimum of quarterly working on steps to align the program with Satellite’s accreditation standards while providing requested supports. Resources and support provided are customized to each educator’s needs, interests and current understanding of quality measures.

After achieving accreditation, the consultant and educator continue to meet at least quarterly to continue this work in a process of ongoing quality improvement and support.

Program category movement April – June 2025	New affiliate programs	New associate programs	Newly accredited programs	Newly reaccredited	Left Satellite**
YoungStar Region: Southern*	0	0	0	5	1
<i>City of Madison*</i>	0	0	0	4	1
YoungStar Region: Southeast	5	2	1	0	1
YoungStar Region: Western	0	0	0	0	0
YoungStar Region: Northern	0	0	0	0	0
YoungStar Region: Northeast	2	5	2	0	2
Total	7	7	3	5	4

* Data for the city of Madison is pulled out separately and also embedded in the data for the Southern region

**Programs leave Satellite for a variety of reasons. This quarter 2 affiliate (new) programs, 1 associate program and 1 accredited program left:

- 3 programs left voluntarily, for the following reasons:
 - 1 program closing due to retirement
 - 1 program choose not to meet accreditation standards and withdrew
 - 1 program owner returned to the country of her birth
- 1 program left involuntarily—not making progress towards meeting the accreditation standards after receiving significant support over a two-year period from their Satellite consultant.

Satellite’s Loan Program (equipment, curriculum units and resource books): Satellite’s loan library, equipment, and curriculum units are quality improvement and supportive tools available to Satellite participants.

- The library includes topics in early childhood education, family child care business and program assessment.
- Theme-based curriculum units guide providers in curriculum development and implementation. Their contents support children’s development in the areas of STEM, language, social-emotional, and motor skills.
- Equipment loans such as climbers, lofts, unit blocks, and bicycles offer exposure to items providers can consider purchasing for their programs and allow providers with little storage space or available funds a rotation of high-quality equipment.
- As needed, providers may work with their consultant to learn how their equipment, curriculum and environment interact to align with quality standards. Coaching in topics like the child care environment, child development, learning opportunities and curriculum implementation is supported by book, equipment and unit loans.

Satellite Supports	Total	Q1 2025	Q2 2025	Q3 2025	Q4 2025
Newsletters	6	3	3		
Gathering in community	9	4	5		
Consultant visits in programs	397	202	195		
Other consultant contacts	3959	1771	2188		
Loan program					
Resource books	18	10	8		
Curriculum units	285	205	80		
Equipment	714	426	288		



Satellite's Professional Learning

April – June 2025

Professional Learning	Total	Q1 2025	Q2 2025	Q3 2025	Q4 2025
Hours offered	24	24	58		
Total attendees	265	265	245		

Exploring Quality in Family Child Care: Back-and-Forth Interactions explored the importance of providing opportunities for children to engage in risky play in early childhood settings. Participants learned what is risky play, why it is important for children's development, and how it can be safely implemented in family child care programs. The session included videos from an interview with Amy Nogar from Amy & Kids Co. Nature Playschool. Grace Eilers facilitated this training on Tuesday, April 8 from 1–2 pm. The event took place on Zoom. All family child care providers in the state of Wisconsin were invited to participate. There were 47 participants in attendance.

Making it Work: Incorporating Rich Art Experiences into a Mixed-Age Setting introduced strategies for supporting children's creative expression in family child care through planning and implementing process-based, developmentally appropriate art opportunities. The session included videos from an interview with family child care educator Tara Ebben (Tikes and Tots Family Child Care). Stephanie Winkel and Grace Eilers facilitated this training on Friday, April 11 from 2:15–5 pm. The event took place at the Wisconsin Family Child Care Conference in Green Bay. The conference attracts family and group child care providers throughout the state of Wisconsin. There were 13 participants in attendance.

Exploring Quality in Family Child Care: Defining Your Philosophy explored the importance of creating a clear and transparent program philosophy statement in family child care. Participants learned the components of and how to write a clear philosophy statement through reflecting on their own set of beliefs, goals, and values about child development. Grace Eilers facilitated this training on Saturday, April 12 from 11–12:15 pm. The event took place at the Wisconsin Family Child Care Conference in Green Bay. The conference attracts family and group child care providers throughout the state of Wisconsin. There were 15 participants in attendance.

Open-Ended Questions: What, How and Why explored how adults support children's critical thinking and pre-literacy development with open-ended questions. Participants practiced identifying open-ended and closed-ended statements and learned strategies for implementing open-ended prompts in a mixed-age group. Rachel Halstead and Stephanie Winkel facilitated this training on Saturday, April 12 from 2:15–3:30 pm. The event took place at the Wisconsin Family Child Care Conference in Green Bay. The conference attracts family and group child care providers throughout the state of Wisconsin. There were 13 participants in attendance.

How to Create an Environment that Supports Children's Ideas AND Maintains Your Boundaries introduced how to say yes to children's ideas more often in family child care. Participants learned ways to adjust the environment to support children's increasing need for autonomy and how to maintain boundaries by using positive guidance techniques. The event featured video interviews with family child care educators Kathleen Wolfe (Kathy's Kids Home Child Care), Janell Moran (Honey Pie Nature Playschool), and Sheri Bishop (Precious Cargo). Grace Eilers and Lizz Nolasco (Erikson Institute) facilitated this training on Wednesday, April 23 from 6–8 pm. The event took place on Zoom. All family child care providers in the state of Wisconsin were invited to participate. There were 65 participants in attendance.

Erikson Institute Presents: Using Observations to Plan Curriculum introduced how to collect objective observations of infants, toddlers, and preschoolers in family child care. Participants learned how to then use objective observations to assess, plan, and implement responsive program curriculum with a mixed-age group. Lizz Nolasco, Assistant Director of Project Implementation at the Erikson Institute, facilitated this training on Tuesday, May 13 from 1–2 pm. The event took place on Zoom. All family child care providers in the state of Wisconsin were invited to participate. There were 44 participants in attendance.

Pyramid Model Family Child Care E-Modules with Reflective Coaching offered participants a space to reflect on the Pyramid Model Family Child Care E-Modules, which focus on supporting social and emotional development in young children. Participants met monthly on Mondays from January 27–June 9 to discuss the most relevant Pyramid Model strategies, their current practice, and how to implement new techniques. Two cohorts met in the evenings, one from 6–7 pm and another from 7:15–8:15 pm. The discussions took place on Zoom. Satellite family child care educators were invited to participate. In the first cohort, 10 participants completed the course, and in the second cohort, 7 participants completed the course.

Exploring Quality in Family Child Care: Open-Ended Questions introduced techniques for providing open-ended statements that develop children's thinking, vocabulary, and social-emotional skills. The course explored how adults support meaningful conversations and expand learning for infants, toddlers, preschoolers, and school agers with open-ended questions. Grace Eilers facilitated this training on Tuesday, June 10 from 1–2 pm. The event took place on Zoom. All family child care providers in the state of Wisconsin were invited to participate. There were 31 participants in attendance.

Outreach

April – June 2025

Satellite provided information about our accreditation system and supports to family child care educators at the Wisconsin Family Child Care Association Annual Conference on April 10-12 in Green Bay.

Satellite Representation and Collaborations in 2025

Wisconsin Family Child Care Association (WFCCA): Satellite representative Laura Simkin, Satellite Associate Director, sits on the board of WFCCA. Satellite's role with WFCCA is to provide resources and support for the association as a community partner, along with providing information about Satellite's services and accreditation program. This quarter, the board met May 17 and the annual conference took place April 10-12.

Be Heart Madison–Community Pyramid Model Implementation: Satellite's Associate Director Laura Simkin and Accreditation Consultant Mykenzie Lerg represent Satellite within this group, dedicated to a community-wide implementation of the Pyramid Model. This quarter, Be Heart Madison met on April 8.

Milwaukee ECE Coalition: Satellite Accreditation Consultant Rachel Halstead and Satellite Associate Director Laura Simkin represent Satellite on this coalition, whose work is focused on identifying and responding to pressing needs in Milwaukee's early childhood education sector. These include increased access to quality and affordable ECE for Milwaukee's Black and Brown families; increased recruitment, retention, compensation, and professionalization among Milwaukee's ECE workforce. The coalition includes 200 members, including early childhood educators, stakeholders, parents and community members. This quarter, Satellite staff joined Milwaukee ECE Coalition meetings on April 11, May 2 and June 6. Laura Simkin presented information on a potential partnership between Satellite and Milwaukee Succeeds at the April 11 and May 2 meetings, gathering member feedback on the partnership at both meetings.

Wisconsin Alliance for Infant Mental Health (WI-AIHM): Satellite participated in a pilot program for WI-AIHM's launch of Pyramid Model coaching in family child care programs. Satellite and WI-AIHM entered into a contractual agreement to provide intensive coaching in social and emotional programming in two Satellite family child care programs. This partnership expanded to include a pilot of the Pyramid Model Family Child Care E-Modules with a reflective coaching component. *See next page for more details.*

Early Learning Connections: Associate Director Laura Simkin is on the planning committee for the annual Early Learning Connections Conference. This Madison-area early childhood conference brings together community partners including Madison Metropolitan School District, 4Cs, WECA, Reach Dane, City of Madison Child Care Unit, and the Department of Children and Families for a two-day early childhood conference. Planning for the 2026 conference begins soon.

Partner Highlight

Wisconsin Alliance for Infant Mental Health (WI-AIMH)

Satellite and WI-AIMH are wrapping up a 14-month partnership focused on the new Pyramid Model for Family Child Care, based on the Pyramid Model Family Child Care Benchmarks of Quality. These benchmarks fully align with Satellite's accreditation standards, making this a natural partnership and an extension of Satellite's current work support family child care educators.

Our partnership over the last 14 months was two-fold. First, Satellite consultant Mykenzie Lerg provided intensive coaching to two entry-level Satellite accreditation system programs. Their work together focused on social and emotional programming, as measured by the new Pyramid Model for Family Child Care. Pre and post ratings occurred, measuring progress in the implementation of the Pyramid Model's Benchmarks of Quality. Results from Satellite's participation in this pilot project indicated that there was small, positive movement in social and emotional programming indicators.

In addition to the intensive coaching pilot project, Satellite consultant Mykenzie Lerg also launched a pilot study focused on the Pyramid Model Family Child Care E-Modules with reflective practice. She facilitated monthly reflective sessions between January 2025 and June 2025, with 17 educators contributing to dialogue focused on social-emotional development.

This E-Module course with reflective practice brought together family child care educators throughout Wisconsin with a wide range of experience and educational backgrounds. Mykenzie focused on creating a supportive group learning environment. Throughout the reflective sessions, educators presented specific scenarios from their programs related to pyramid model topics, seeking input and support from the other educators. The educators were able to share their experiences and ways of implementing social emotional strategies to the group.

The reflective framework for the monthly sessions helped educators feel seen, heard, and valued. For some educators, it affirmed their teaching practices and provided language to use with families to communicate their teaching practices.

Almost half of the participants brought over 20 years of family child care experience. Regardless of the high amount of previous training and experience, they reported the training to be relevant and beneficial because of the large variety of topics and resources provided in the E-Modules.

Educators reported enjoying the flexibility of completing the e-modules independently. They had time between sessions to reflect before joining together as a larger group for reflective discussion. This allowed for deep and meaningful dialogue during each reflective session.

Partners

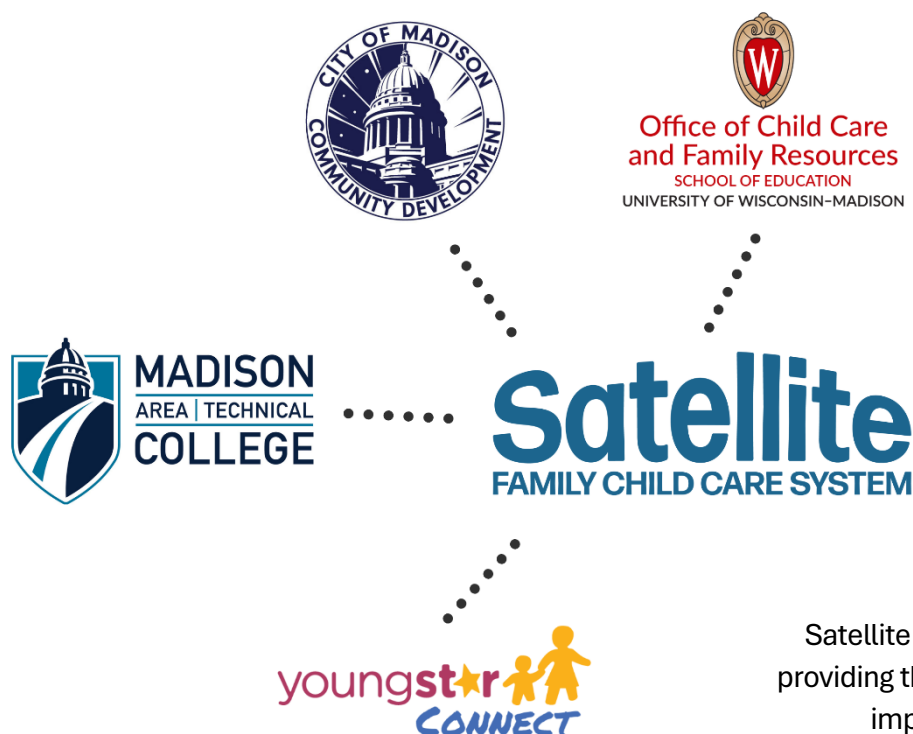
Funding Satellite's Accreditation and Support Services

City of Madison: For decades, Satellite has contracted with the city's Child Care Unit to provide accreditation and support for family child care programs in Madison. The city offers additional support to our participants, including stabilization funds to increase the income of programs who are taking low-income families and occasional professional development opportunities.

Madison College: Satellite and Madison College participated in a partnership from 2023 through June 2025. Madison College supported the cost of accreditation and support to programs near their 7 southern Wisconsin campuses. Students at Madison College were eligible to receive an enhanced family referral process when looking for child care within Satellite's participating child care programs.

Shine Early Learning: In 2023, a new partnership formed "YoungStar Connect", which includes collaboration among many of early childhood agencies in Wisconsin, including Satellite. Satellite receives funding through this partnership for the accreditation and support of 90 family child care programs outside of Madison. Through June 2025, this partnership also provided for the Family Child Care Content Specialist position, which accounts for our ability to dramatically increase our professional development offerings.

University of Madison – Office of Child Care and Family Resources (OCCFR): Satellite and UW-OCCFR have a long-standing relationship. UW-Madison students, staff and faculty are eligible to receive an enhanced family referral process when looking for child care within Satellite's participating child care programs. UW-OCCFR provides additional funding to Satellite for our accreditation and support services, funding for Satellite staff and program professional development, and regular gifts –including many beautiful children's books--to our programs.



Satellite is incredibly grateful to those providing the resources so we may do this important work. Thank you!

Group Events for our Educators

April – June 2025

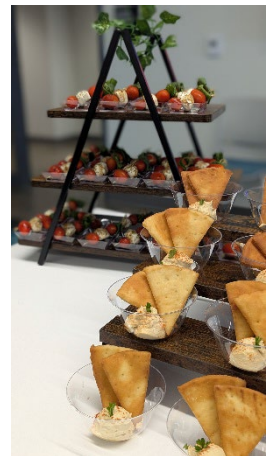


Satellite gathering at the Wisconsin Family Child Care Conference: On April 11, over 20 Satellite participants joined together for an evening after a busy day at the WFCCA conference to eat Glass Nickle pizza, get to know each other better and enjoy great conversation.

Educator Appreciation Dinner, Southern region: On April 14, over 70 educators and their staff and individuals from supporting organizations came together for the annual educator appreciation event in Tenney Park in Madison. We enjoyed good food from Everly and great conversation. The [Madison Reading Project](#) graciously offered to bring over two thousand books to this event for programs to browse – and they donated 25 books per program!

Educator Appreciation Dinner, Southeast region: On June 26, 12 family child care educators and Satellite staff came together in the Milwaukee Succeeds beautiful group space at ThriveOn King for the annual educator appreciation event. We enjoyed delicious from Cookie Kitchen Caterers and educators received gifts of appreciation, including books, flowers, tee-shirts and bags—and certificates acknowledging their participation in Satellite's accreditation system. It was a beautiful evening full of wonderful conversation.

Noche Latina: An event for Spanish-speaking, Satellite affiliated family child care educators held at Satellite's office. Noche Latina aspires to build a network of supportive relationships. Events include socializing, meeting new educators, networking and brief Satellite updates. We also have a lot of fun! Satellite consultant Estella Vargas leads this group. This quarter, Noche Latina met on April 9 and June 11. A total of 30 family child care educators participated, sharing food, stories and relaxing together.



2025 Surveys of Programs

Enrollment Data

Results from 99% of Satellite family child care programs

All Satellite programs	Q1 2025	Q2 2025	Q3 2025	Q4 2025
Children in Satellite programs	686	754		
Recipients of Wisconsin Shares	161 (23%)	203 (27%)		
City of Madison data	Q1 2025	Q2 2025	Q3 2025	Q4 2025
Children in Satellite programs	181	222		
Recipients of Wisconsin Shares	42 (23%)	42 (19%)		
Madison College data	Q1 2025	Q2 2025	Q3 2025	Q4 2025
Children with a parent who is a Madison College student	16	10		
University of Wisconsin–Madison data	Q1 2025	Q2 2025	Q3 2025	Q4 2025
Children 0-1 years old with a parent who is UW-staff	2	6		
Children 2 years old with parent who is UW-staff	9	5		
Children 3-5 years old with parent who is UW-staff	7	8		
Children 6-12 years old with parent who is UW-staff	2	0		
Children 0-1 years old with a parent who is UW-faculty	4	4		
Children 2 years old with parent who is UW-faculty	2	1		
Children 3-5 years old with parent who is UW-faculty	4	4		
Children 6-12 years old with parent who is UW-faculty	2	0		
Children 0-1 years old with a parent who is a UW-student	5	3		
Children 2 years old with parent who is a UW-student	0	5		
Children 3-5 years old with parent who is a UW-student	0	2		
Children 6-12 years old with parent who is a UW-student	6	1		

754

Number of children in Satellite-participating programs

27%

of the 754 children in Satellite programs utilize Wisconsin Shares tuition assistance.

Family Referral Data

We support Satellite accredited programs by connecting family child care programs with families looking for high quality early care and education through our referral system. Families may choose to complete the "Find Satellite accredited family child care programs" referral form on [Satellite's website](#), call or email us.

Families contacting Satellite receive a list of all Satellite accredited programs and the openings list. Madison College students received an additional list of Satellite affiliate and associate level program openings within 30 miles of Madison, Reedsburg, Watertown, Portage and Fort Atkinson Madison College Campuses.

Total* referrals connecting families to Satellite program child care openings

All Satellite Programs	Q1 2025	Q2 2025	Q3 2025	Q4 2025
Referrals to families	59	63		
Total children needing child care	69	67		

University of Wisconsin-Madison data*	Q1 2025	Q2 2025	Q3 2025	Q4 2025
UW students	12	9		
UW staff	22	20		
UW faculty	8	9		
UW hospital		10		
Total children needing child care	36	42		

**Some families have multiple associations and are included in each disaggregated category. These families are listed once in the total number of referrals.*

Madison College data	Q1 2025	Q2 2025	Q3 2025	Q4 2025
Madison College students	7	4		
Total children needing child care	11	4		

Child age and desired schedule for child care openings		Q1 2025	Q2 2025	Q3 2025	Q4 2025
0-2 years old Total: 60	0-2 years old part-time schedule	14	16		
	0-2 years old full-time schedule	29	19		
	0-2 years, either full or part time schedule	17	21		
3-5 years old Total: 7	3-5 years old part-time schedule	2	1		
	3-5 years old full-time schedule	5	6		
	3-5 years, either full or part time schedule	0	3		
6+ years old Total: 2	6+ years old part-time schedule	1	0		
	6+ years old full-time schedule	1	0		
	6+ years, either full or part time schedule	0	1		

Paying for Child Care – *Data.based.on.family.referrals*

Families seeking child care and planning to use tuition assistance	Q1 2025	Q2 2025	Q3 2025	Q4 2025
Child Care Tuition Assistance Program (UW-OCCFR)	4	2		
City of Madison child care assistance	0	0		
Wisconsin Shares	7	9		
No plans to use tuition support	48	52		

Program Owners' Formal Education

as of 6/30/25

Satellite's 92 program owners run 97 programs. Of the 92 program owners, 85 (92%) have completed college coursework. Of that group, 82 (96%) have taken early childhood education college classes and 69 (81%) have completed college classes in non-early childhood education subjects.

Completed Credentials		
Family Child Care	23	25%
Infant Toddler	31	34%
Preschool	28	30%
Afterschool and Youth Development	0	--
Administrator	12	13%
Leadership	4	4%
Program Development	6	7%
Diversity	1	1%
Inclusion	5	5%
Supporting Dual Language Learners	5	5%
Nature-Based Early Childhood Education	6	7%
total	121	

Completed Degrees

Associate's degree* +	35	38%
Associate's degree in early childhood education or similar focus	21	23%
CDA-Child Development Associate degree	3	3%
Bachelor's degree ++	32	35%
Bachelor's degree in early childhood education or similar focus	6	7%
Bachelor's degree in education (DPI teaching degrees)	8	9%
Master's degree +++	6	7%

*Three of our program owners hold two associate degrees each (not double majors)

+Associate degrees in subjects other than early childhood education include Transportation; Health Care Administration; Medical Assisting (2); Accounting (2) ; Business; Human Services; Administrative Assistant-Secretarial; Veterinary Technician; Executive Secretary; Arts

++Bachelor degrees in subjects other than early childhood education or education include Accounting (3), Biology, Business Management (3), Communication Arts, Criminal Justice, Drawing, English, Theater (2), Fine Arts, Graphic Design, Hospitality and Tourism Management, Linguistics-Interpreting and Translation, Social Work, Women's Studies, Developmental Psychology

+++Master degrees in: Leadership and Organizational Development; Education-Early Childhood specialty; Instructional Technology; Education-Administrative Leadership; MFA-Painting; Bilingual Education

Satellite program owners exemplify the ideal of lifelong learning, with the following degrees and credentials currently in progress:

- ✚ Credentials: 10 credentials are currently in progress--Administrator (4); Family Child Care (2); Preschool (1); Supporting Dual Language Learners (2); Nature-Based Early Childhood Education
- ✚ Associate degree: 5 working towards associate degrees in early childhood education
- ✚ Bachelor degree: 5 working towards bachelor's degrees in: Early Childhood Education (3); Community Engagement with Child Care minor; and Social Work.
- ✚ Master degree: 2 working towards master's degrees in: Special Education; and Education in Early Childhood Education Policy

Satellite Family Child Care Program Owner Demographics

as of 6/30/25

Race	#	%
White/Caucasian	60	65%
Black/African American	14	15%
Asian	2	2%
American Indian/Alaskan Native	0	--
Native Hawaiian/Other Pacific Islander	0	--
Multi-racial	7	8%
Balance/Other	0	--
Prefer not to answer*	10	11%

Ethnicity	#	%
Hispanic or Latino	24	26%
Not Hispanic or Latino	68	73%
Prefer not to answer	1	1%

*All 8 individuals indicating that "Prefer not to answer" for race chose "Hispanic or Latino" for ethnicity.

Gender	#	%
Female	92	99%
Male	0	--
Non-binary	0	--
Transgender	1	1%
Other	0	--

Age	#	%
18-29 years old	4	4%
30-59 years old	81	87%
60-74 years old	8	9%
75 and older	0	--
Prefer not to answer	0	--

Disability Status	#	%
Disabled	3	3%
Not disabled	87	94%
Prefer not to answer	3	3%

Household Size	#	%
1	8	9%
2	22	24%
3	19	20%
4	23	25%
5	17	18%
6+	4	4%

